

BlackPCR™

BlackCheck CIAV/MDV/REV Multi Detection Kit

Product Information

Product code BCCMR-96T

Component BlackCheck PCR premix for CIAV/MDV/REV Multi Detection

Storage Conditions & Stability

It is recommended to store this kit at -20°C and use it immediately after thawing. Repeated freezing and thawing can seriously affect results.

Exp. Date Marked separately on the Box

Contents of BlackCheck PCR PreMix Kit

BlackCheck PCR PreMix for CIAV/MDV/REV multi detection - 96 TEST (8 strip x 12, 13µl/tube)

Description

Representative immunosuppressive diseases occurring in chickens are three types: chicken infectious anemia virus(CIAV), Marek's disease virus(MDV), and reticuloendotheliosis virus(REV). When the disease develops, growth is slowed, and immunosuppression is induced, which can lead to mortality rates of up to 60%. This can cause serious damage to broilers on the farm, so prompt action is needed to reduce the scale of the damage. By detecting a virus that infects chickens by PCR, it is possible to quickly respond to immunosuppressive diseases in chickens.

BlackCheck PCR CIAV/MDV/REV Multi Detection Kit is a multi-PCR kit designed to detect viruses that cause immune diseases in poultry at once.

Characteristics

Convenient: This kit includes all the components necessary for the entire PCR process (PCR premix, primer pairs), so you can prepare a quick reaction only by preparing a DNA sample.

Standard reaction protocol

1. Preparation of Genomic DNA Sample

Extract gDNA from test samples using a genomic DNA (gDNA) extraction kit, dissolve in nuclease-free water, and store frozen until testing.

2. Reaction condition

Add the following components to a thin-walled PCR tube:

1) BlackCheck PCR CIAV/MDV/REV Multi Detection Kit:

BlackCheck PCR PreMix (CIAV/MDV/REV) Multi Detection Kit	13.0 µl
Nuclease-Free water	x µl
DNA template (>0.1ng gDNA)	x µl
Total reaction volume	20 µl

2) PCR Cycling

Initial Denaturation	95°C	5 min	1 cycle
Denature	95°C	30 sec	
Anneal	57°C	1 min	35 cycle
Extension	72°C	1 min	
Final extension	72°C	5 min	1 cycle

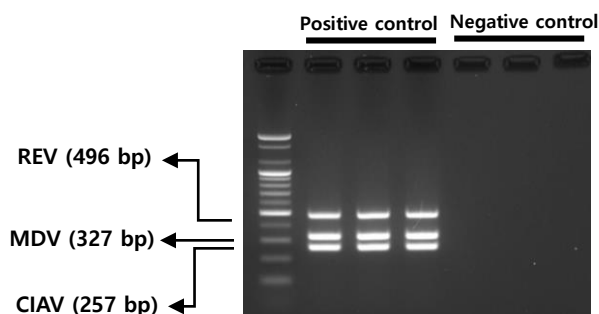
Check the Result

After electrophoresis by loading 10 µl of the PCR reaction solution directly on a 1% agarose gel, check whether the gene amplification of REV (496bp), MDV (327bp), CIAV (257bp) or not.

- If the negative control is detected as negative, normal results are determined.
- If the positive controls REV (496 bp), MDV (327 bp), CIAV (257 bp) read as positive, the PCR reaction is considered valid.
- A positive determination is made when REV, MDV, and CIAV are detected simultaneously or separately as a result of PCR of a sample. If REV, MDV, and CIAV are not detected, it is judged as negative.

Target genes	Predicted size
REV (Reticuloendotheliosis virus)	496 bp
MDV (Marek's disease)	327 bp
CIAV (Chicken infectious anemia virus)	257 bp

Ex) BlackCheck PCR CIAV/MDV/REV Multi Detection Kit



Cautions

- This kit is a research reagent and cannot be used to diagnose infection.

판매원:



[41516] 33 Yutongdanji-ro 24-gil, Buk-gu, Daegu, Seoul, KOREA
Tel: 053 383 2989 Fax: 053 383 2986 E-mail kc1111@naver.com

제조원:



[08592] 917, Daeryung Techno Town 12-cha, 14, Gasan digital 2-ro, Geumcheon-gu, Seoul, KOREA
Tel: 02 2061 8033 Fax: 02 2061 8034 E-mail sales2@forbio.co.kr